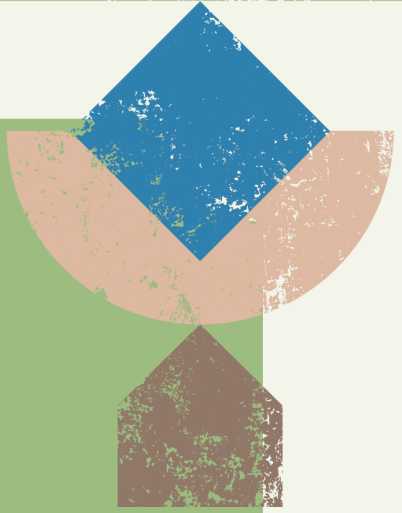
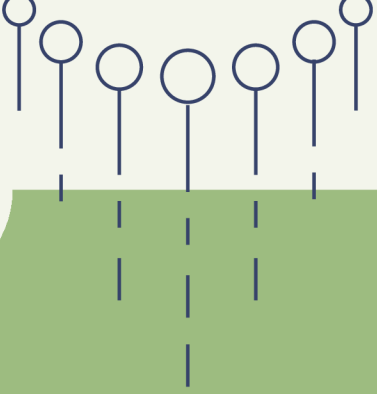
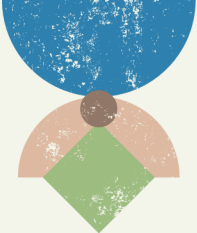










**NURTURE & GROW  
CHILDCARE**

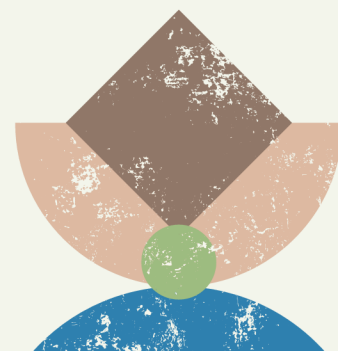
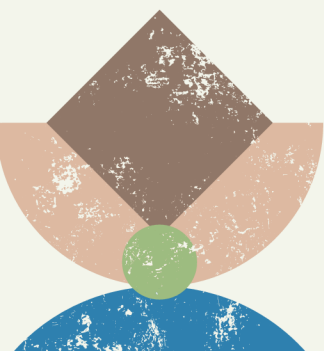
*Funding*  
**EXPLAINED**





# Table of Content

	Government Funding - How it works	01
	How we calculate fees	02
	What does the enrichment fee cover?	03
	How to apply for funding	04
	Other financial support	05
	Need help?	06



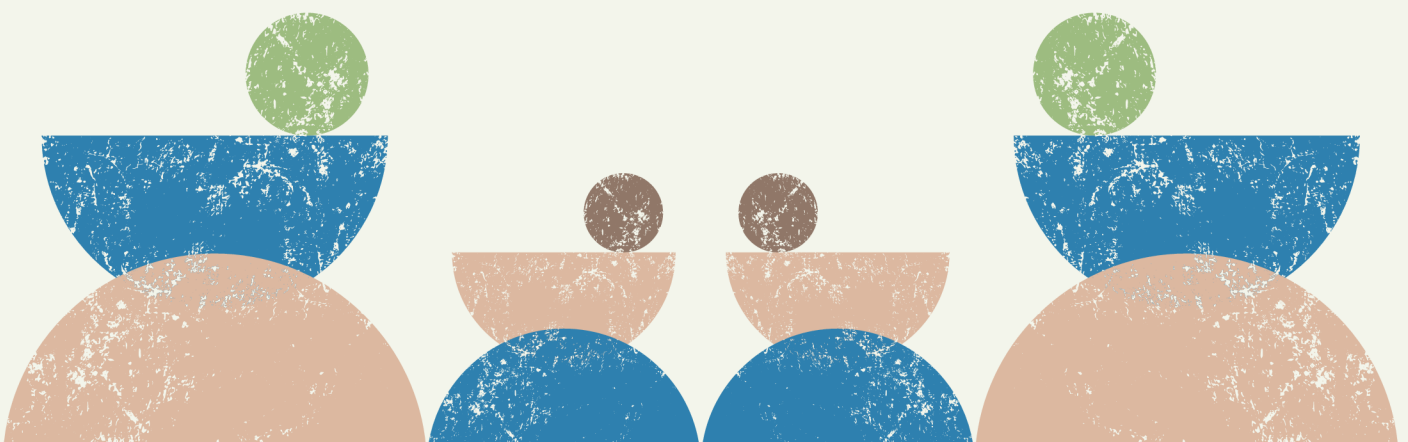


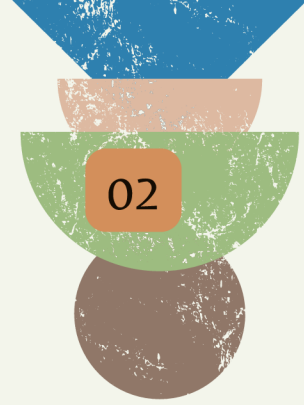

# Government Funding – How It Works

We receive government funding to help with childcare costs! Eligible families can receive:

🕒 15 or 30 hours per week  
(Term Time Only – 38 weeks)

🌍 11 or 22 hours per week  
(All-Year Round – Stretched Funding)





# How We Calculate Fees

To keep things fair and simple, we work out an hourly rate:

- ◆ Daily Rate: £84
- ◆ Hours Open: 10.5 hours per day
- ◆ Hourly Rate:  $£84 \div 10.5 = £8$  per hour


## Example Invoice Calculation


### 1 Full Cost Before Funding

 Full-day session: £84

 Attending 2 days a week = £168

### 2 Minus Government Funding

 Funded hours: 11 hours per week

  $£8 \times 11$  hours = £88 deducted

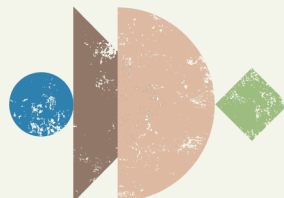
### 3 Add Enrichment Fee

 Enrichment fee: £2.50 per hour (or £1.50 for preschoolers)

  $£2.50 \times 11$  hours = £27.50 added

### 4 Final Invoice Example

 Total after funding & fees: £107.50



# What Does the Enrichment Fee Cover?

The enrichment fee supports all the extras that make our childcare exceptional! 🏠 ✨

- ✓ Cleaning & hygiene products 🧼
- ✓ Staff training & development 👩🏫
- ✓ Educational resources 📚
- ✓ Cooking ingredients 🍏
- ✓ Rent, rates, & utilities 💡 💧



# How to Apply for Government Funding

🔍 Check eligibility & apply: [www.childcarechoices.gov.uk](http://www.childcarechoices.gov.uk)

📌 Already eligible? You'll need to get your 30-hour code and update it every 3 months!

📌 Update your code:  
[www.gov.uk/sign-in-childcare-account](http://www.gov.uk/sign-in-childcare-account)

💡 We use Funding Loop!

This makes applying and managing funding super easy ✅  
You can track your funding balance, payments, and updates all in one place! 🎉

# Other Financial Support for Parents

## Working Parents – Tax-Free Childcare

Did you know you could save 20% on childcare costs? 🎉

The government contributes £2 for every £8 you pay!

 Check eligibility & apply here:

[www.gov.uk/tax-free-childcare](https://www.gov.uk/tax-free-childcare)

## Universal Credit – Help with Childcare Costs

If you're eligible for Universal Credit, you can claim back up to 85% of your childcare costs! 🏠

 Check eligibility & apply here:

[www.gov.uk/help-with-childcare-costs/universal-credit](https://www.gov.uk/help-with-childcare-costs/universal-credit)



# Need help?

We're here to support you! ❤️ If you have any questions about funding, applications, or payments, just ask! 😊



 CALL US:  
01908 501032

 EMAIL US:  
[hello@nurtureandgrow.co.uk](mailto:hello@nurtureandgrow.co.uk)

## ADDRESS

128 Dunthorne Way  
Grange Farm  
Milton Keynes  
MK8 0LW

